

Technical Specifications

Model	ZD 100 M	ZD 100 D	ZD 100 F
Drive Type	4 x 2	4 x 2	4 x 4
Overall Dimensions (LxWxH) (mm)	5035 x 1740 x 1680	5035 x 1740 x 1680	5035 x 1740 x 1680
Cargo Box Dimensions (LxWxH) (mm)	1600 x 1650 x 730	1600 x 1650 x 730	1600 x 1650 x 730
Wheel Base (mm)	3025	3025	3025
Wheel Track (Front/Rear) (mm)	1480 / 1470	1480 / 1470	1480 / 1470
Kerb Mass / Payload (kg)	1460 / 500	1460 / 500	1460 / 500
Gross Mass (kg)	2285	2285	2285
Engine	491Q-ME 4 cylinders in line, water cooling, multi-point fuel injection	4JB1 4 cylinders in line, dry type, stainless steel water cooling, overhead valve and direct injection	4G64 4 cylinders in line, water cooling, multi-point fuel injection
Max. Power (hp / kw)	104 / 76	78 / 57	125 / 92
Max. Torque (Nm)	193	174	192
Fuel Consumption (L/100km)	7.8	6.5	7.8
Fuel	ron 93 petrol	o # diesel	ron 93 petrol
Displacement (L)	2.237	2.771	2.351
Compression Ratio	8.8:1	18.2:1	9.5:1
Transmission - manual	5-Speed + reverse	5-Speed + reverse	5-Speed + reverse
Brake (Front/Rear)	disc/drum	disc/drum	disc/drum
Tyre Model	235, 225/75R15	235, 225/75R15	235, 225/75R15
Min. Ground Clearance (mm)	185	185	185
Min. Turning Radius (m)	≤ 6	≤ 6	≤ 6
Max. Speed (km/h)	140	140	140
Seats (persons)	5	5	5



491Q-ME

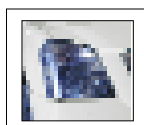
Multi-point Injection Engine has adopted Toyota technique, EURO II Standard

4JB1

Diesel oil Engine, has adopted Isuzu technique, EURO II Standard

4G64

Multi-point Injection Engine has adopted Mitsubishi technique, EURO II Standard



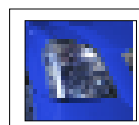
White



Silver White



Silver Grey



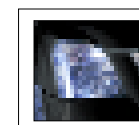
Blue



Green



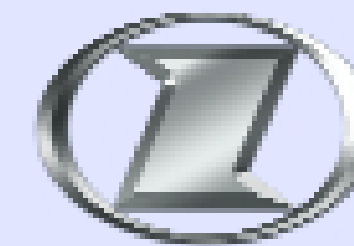
Red



Black



The Xenon headlights, rear lights, brake lights and indicator lights are of modern design to make driving safer.



ZAHAV

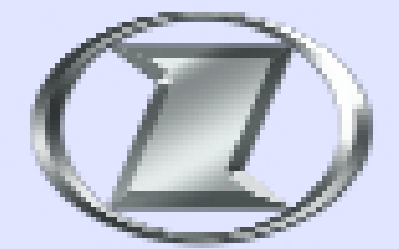


ZAHAV

DOUBLE CABIN PICKUP

Zahav Automobile Co. Ltd.

Wembley Point, Stonebridge Park, Wembley, Middlesex, HA9 6DE, England.
Tel: +44 (0) 20 8903 9477 Fax.: +44 (0) 20 8903 3371 Email: sales@zahavauto.com
www.zahavauto.com



ZAHAV



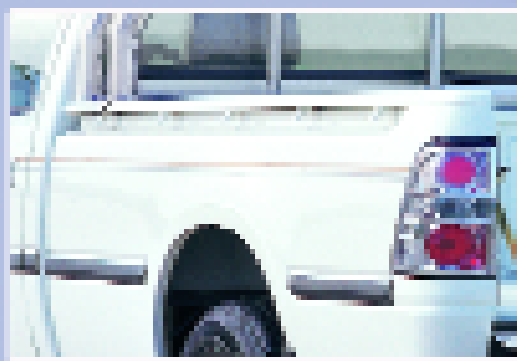
ZAHAV PICKUP
2WD & 4WD

ZAHAV DOUBLE CABIN PICKUP

The Zahav Double Cabin Pickups 4x2 & 4x4 are universal commercial vehicles, and are an ideal choice for those who are looking for an easy, affordable, reliable vehicle for carrying cargo and passengers, both in the city and countryside. The Pickup features good carrying capacity and reliable construction which makes it extremely attractive for commercial usage. The Pickup has good ground clearance, and its rear suspension is of spring leaf type which enables the vehicle to carry up to five persons plus 500 kgs payload.



Spacious cabin accommodates five passengers comfortably



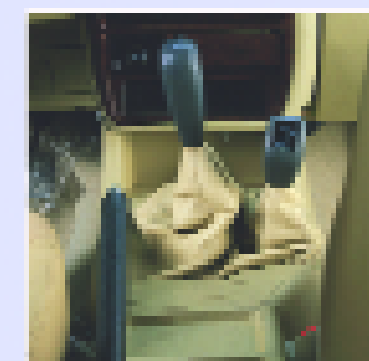
The cargo box is equipped with fixing hooks on the sides to securely fasten the cover whilst goods are being transported.



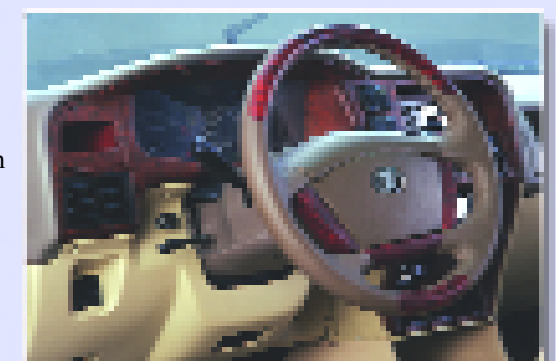
Centrally distributed air conditioning system provides comfort for all the passengers



Electrically operated windows and side mirrors



The drive type can be changed from 2 to 4 wheel drive (and vice versa) whilst in motion.



Elegant wood effect dashboard provides a clear view with easy access to vital information whilst driving